

# SILAGE BUNKER

*Typical installation*



**1** Excavation



**2** Drain



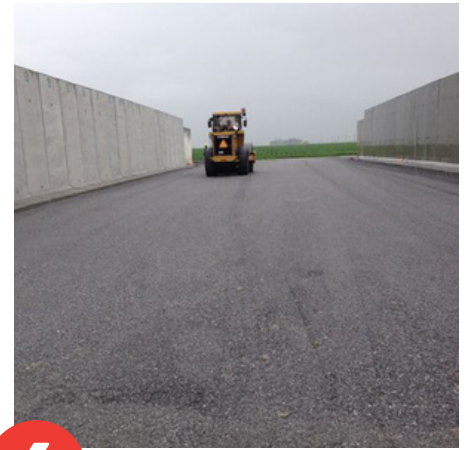
**3** Geotextile



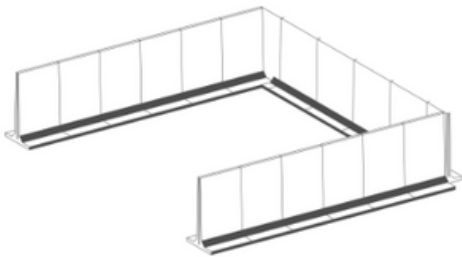
**4** Filling



**5** Installation



**6** Paving



## DURABILITY AND PRECISION

- Our high-performance 42 MPa (6000 Psi) concrete mix contains silica fume to enhance the waterproofing and durability of your installation.
- The reinforcement in our precast concrete bunker walls is strategically positioned to maximize reinforcement and long-term durability.

Our partner Équipements Lambert is at your service to help you calculate the quantity of pit silo walls you need while giving you tips for a better installation!

**Équipements Lambert**

[info@equipementlambert.com](mailto:info@equipementlambert.com)